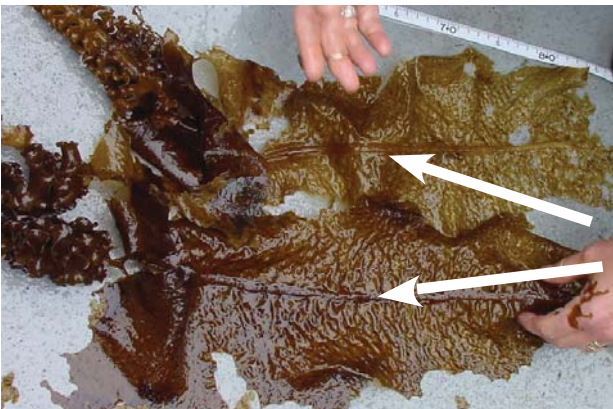


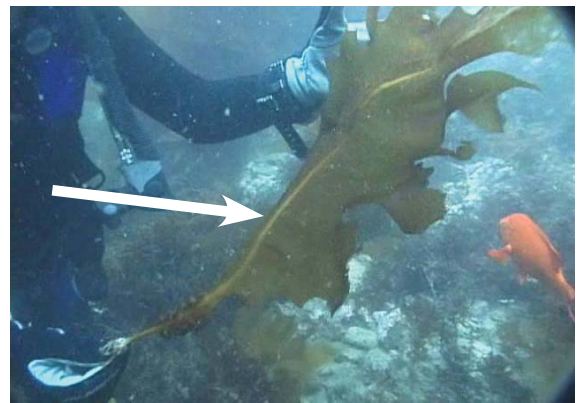
ATTENTION ISLAND DIVERS

Help **LOOK FOR** and **REPORT SIGHTINGS** of this kelp!

The invasive kelp *Undaria pinnatifida* has recently been found on rocky reefs on the north side of **Anacapa Island** and it may be elsewhere.



ID TIPS:
SINGLE FLAT
MID-RIB



FLAT TO
VERY RUFFLED
NEAR
BOTTOM
(DEPENDING
ON AGE)



REPORT LOCATION (GPS) DEPTH NUMBER SEEN PHOTOGRAPH (if possible)
to ***MarineInvasives.org***

Please do not touch or remove this kelp because it can be easily spread!